

# KARIBAN

REFERENCE : K252

SIZES : XS\_S\_M\_L\_XL\_XXL

**COMPOSITION :**

Main fabric : Good carded cotton pique 220 100%cotton

Main fabric : Cotton twill 210 For half moon and front placket  
100%cotton

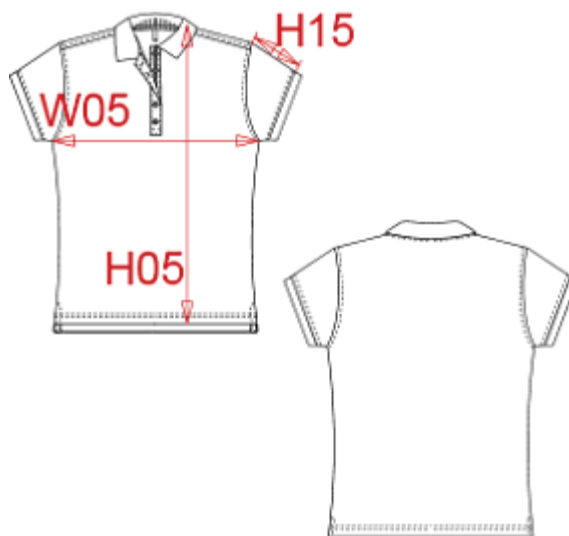
**WEIGHT :**

Main fabric : 220 gsm

Main fabric : 210 gsm

**ARTICLE WEIGHT :**

185 gr/pc



DESCRIPTION										COLORS		PANTONE SERIGRAPHIE	
<b>Français :</b> Polo manches courtes femme <b>English :</b> Ladies' short sleeve polo shirt <b>Nederlands :</b> Dames polo korte mouwen <b>Deutsch :</b> DAMEN KURZARM POLO <b>Español :</b> Polo de manga corta para mujer <b>Italiano :</b> POLO DONNA MANICHE CORTE <b>Português :</b> Polo de senhora manga curta										Red / White / Navy		200C / White / 296C	
										Navy / White / Red		296C / White / 200C	
										White / Navy / White		White / 296C / White	
MEASUREMENT													
Description	Tol +/-	Tol +/- Taille max	XS	S	M	L	XL	XXL					
H05 Hauteur totale devant / Front total height			61	62,50	64	65,50	67	69,25					
W05 1/2 largeur poitrine / 1/2 chest width	2,0%	2,0%	44	46	48	50	52	55					
H15 Longueur manche / Sleeve length			10,80	11,15	11,50	11,85	12,20	12,75					
CARE LABEL													
PACKING													
Box	25 pcs / box XS-S => L:45cm W:35cm H:18cm GW:7.20kg NW:6.00kg M-L => L:48cm W:37cm H:18cm GW:8.00kg NW:7.00kg XL-XXL => L:52cm W:37cm H:18cm GW:9.00kg NW:7.60kg												